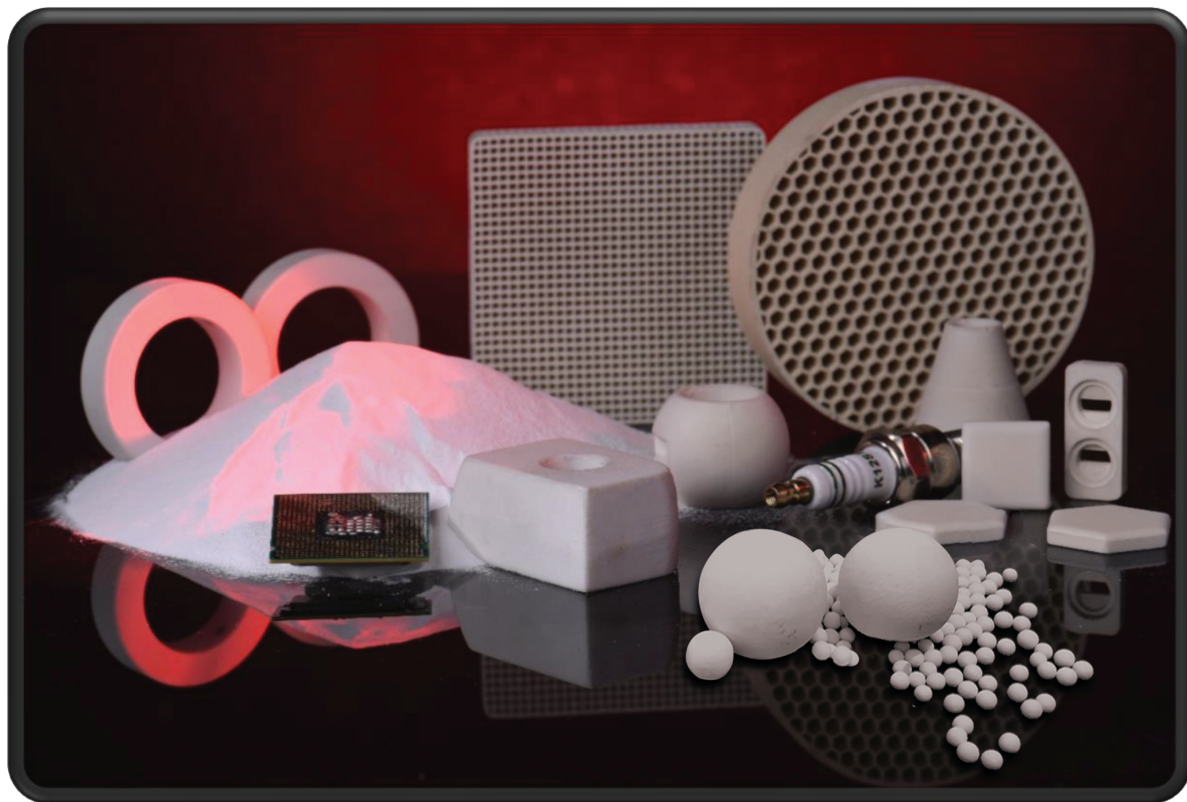




**ALPACO**

**ALUMINIUM PARS OXIDE OF KASRA Co.**

**Products Databook**



<http://www.alpaco.co>



**ALPACO**

**ALUMINIUM PARS OXIDE OF KASRA Co.**

## Aluminum Oxide (Alumina)

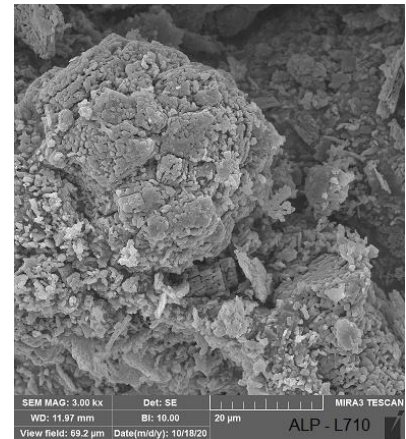
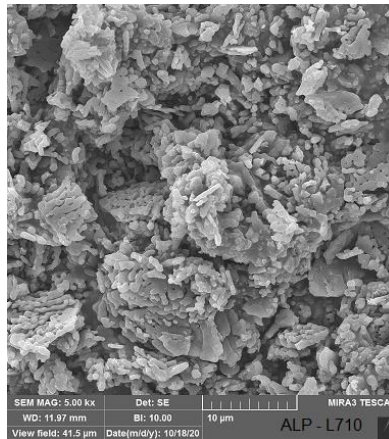
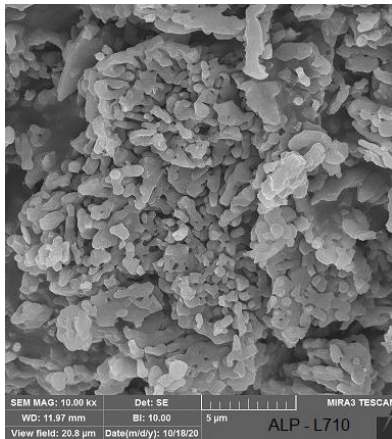
ALPACO Calcined Aluminas are produced in different grades of calcination and soda content, supplied in both unground and ground Particles to satisfy diverse customer requirements.

### Soft Calcined Alumina

### ALP – L710

Low Soda		Product	ALP - L710 (P90)	ALP - L710 (P05)	ALP - L710 (P20)
Typical Properties					
Chemical Composition	H2O	[%]	0.04	0.1	0.04
	L.O.I	[%]	0.05	0.1	0.05
	Fe2O3	[%]	0.01	0.02	0.01
	SiO2	[%]	0.01	0.02	0.02
	Na2O	[%]	0.15	0.15	0.15
	Al2O3	[%]	99.7	99.7	99.7
D90 (Master Size, Laser Diffraction)		[ $\mu$ m]	120	6	20
D50 (Master Size, Laser Diffraction)		[ $\mu$ m]	60	3.50	12
$\alpha$ Crystal Size		[ $\mu$ m]	1.2 ~ 1.5	< 1.5	1.2 ~ 1.5
$\alpha$ - Alumina		[%]	> 95	> 95	> 95
BET		M <sup>2</sup> /gr	3.2 – 3.85	3.5 – 4.2	3.2 – 3.95
Bulk Density	Loose	[g/cm <sup>3</sup> ]	0.95	0.85	0.90
	Packed	[g/cm <sup>3</sup> ]	1.95	1.90	1.90
Packing		Big Bag		~ 1000 kg	

ALP – L710: Generic Grade for Various Applications. Low Dust and Good Fluidity.





**ALPACO**

**ALUMINIUM PARS OXIDE OF KASRA Co.**

## Aluminum Oxide (Alumina)

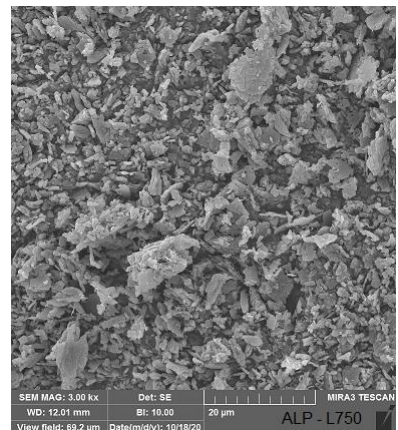
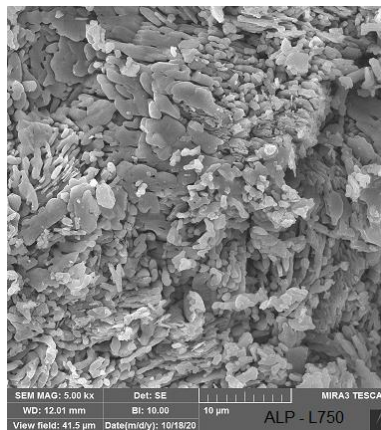
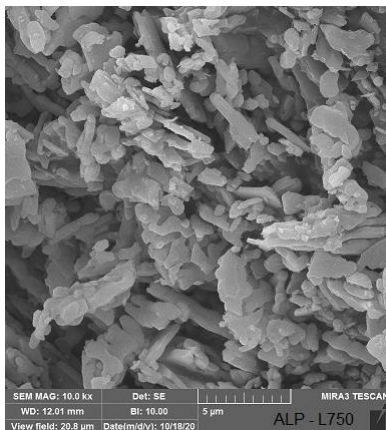
ALPACO Calcined Aluminas are produced in different grades of calcination and soda content, supplied in both unground and ground Particles to satisfy diverse customer requirements.

### Medium Calcined Alumina

### ALP - L750

Low Soda		Product	ALP - L750 (P90)	ALP - L750 (P05)	ALP - L750 (P20)
Typical Properties					
Chemical Composition	H2O	[%]	0.04	0.1	0.04
	L.O.I	[%]	0.05	0.1	0.05
	Fe2O3	[%]	0.01	0.01	0.01
	SiO2	[%]	0.01	0.01	0.02
	Na2O	[%]	0.15	0.15	0.15
	Al2O3	[%]	99.7	99.7	99.7
D90 (Master Size, Laser Diffraction)		[µm]	120	6	20
D50 (Master Size, Laser Diffraction)		[µm]	65	3.5	12
α Crystal Size		[µm]	1.5 ~ 2.2	< 1.8	1.5 ~ 2.2
BET		M <sup>2</sup> /gr	1.5 – 1.8	1.8 – 2.1	1.6 - 19
Bulk Density	Loose	[g/cm <sup>3</sup> ]	1.15	0.95	1.05
	Packed	[g/cm <sup>3</sup> ]	2.15	2.05	2.05
Packing		Big Bag		~ 1000 kg	

ALP – L750: Generic Grade for Various Applications. Low Dust and Good Fluidity.



## Aluminum Oxide (Alumina)

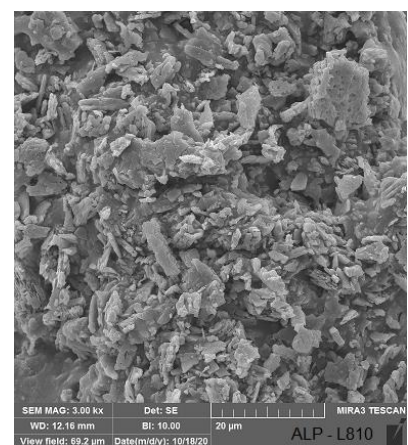
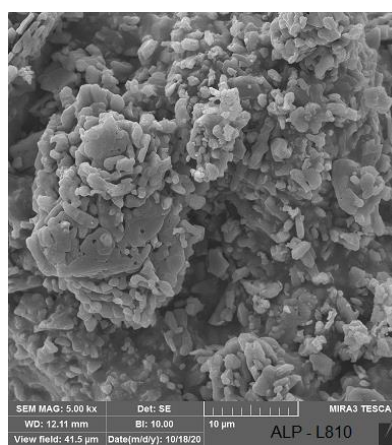
ALPACO Calcined Aluminas are produced in different grades of calcination and soda content, supplied in both unground and ground Particles to satisfy diverse customer requirements.

### Hard Calcined Alumina

### ALP – L810

Low Soda		Product	ALP - L810 (P90)	ALP - L810 (P05)	ALP - L810 (P20)
Typical Properties					
Chemical Composition	H2O	[%]	0.04	0.1	0.04
	L.O.I	[%]	0.05	0.1	0.05
	Fe2O3	[%]	0.01	0.01	0.01
	SiO2	[%]	0.01	0.01	0.02
	Na2O	[%]	0.15	0.15	0.15
	Al2O3	[%]	99.7	99.7	99.7
D90 (Master Size, Laser Diffraction)		[ $\mu$ m]	120	6	20
D50 (Master Size, Laser Diffraction)		[ $\mu$ m]	70	5	12
$\alpha$ Crystal Size		[ $\mu$ m]	1.5 ~ 2.7	< 1.9	1.5 ~ 2.7
BET		M <sup>2</sup> /gr	0.6 – 1.1	0.9 – 1.3	0.9 – 1.2
Bulk Density	Loose	[g/cm <sup>3</sup> ]	1.25	1.05	1.15
	Packed	[g/cm <sup>3</sup> ]	2.25	2.15	2.20
Packing		Big Bag		~ 1000 kg	

ALP – L810: Generic Grade for Various Applications. Low Dust and Good Fluidity.



## Aluminum Oxide (Alumina)

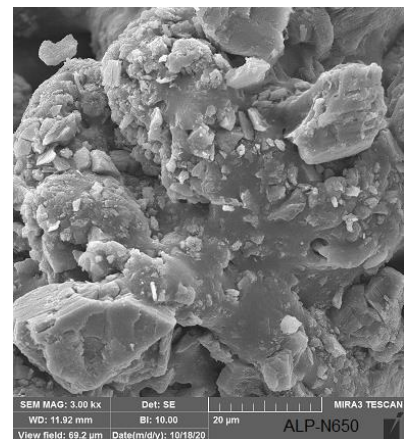
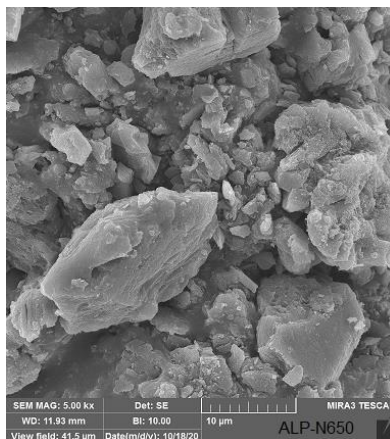
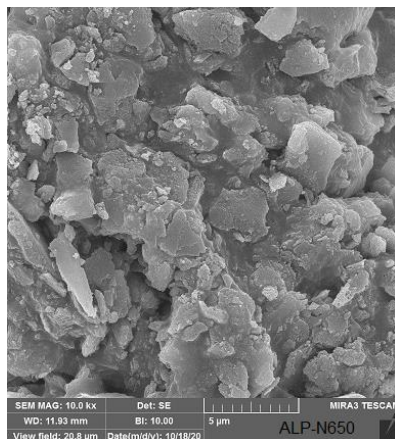
ALPACO Calcined Aluminas are produced in different grades of calcination and soda content, supplied in both unground and ground Particles to satisfy diverse customer requirements.

### Very Soft Calcined Alumina

### ALP – N650

Normal Soda		Product	ALP - N650 (P90)	ALP - N650 (P05)	ALP - N650 (P20)
Typical Properties					
Chemical Composition	H2O	[%]	0.15	0.12	0.15
	L.O.I	[%]	0.3	0.3	0.3
	Fe2O3	[%]	0.01	0.01	0.01
	SiO2	[%]	0.01	0.01	0.02
	Na2O	[%]	0.45	0.45	0.45
	Al2O3	[%]	99.06	99.05	99.07
D90 (Master Size, Laser Diffraction)		[ $\mu$ m]	120	6	20
D50 (Master Size, Laser Diffraction)		[ $\mu$ m]	60	3.5	12
$\alpha$ Crystal Size		[ $\mu$ m]	0.8 ~ 1.2	< 0.95	0.8 ~ 1.2
BET		M <sup>2</sup> /gr	50 - 70	60 – 80	55 - 75
Bulk Density	Loose	[g/cm <sup>3</sup> ]	0.95	0.90	0.6
	Packed	[g/cm <sup>3</sup> ]	1.75	1.70	1.75
Packing		Big Bag	~ 1000 kg		

ALP – N650: Generic Grade for Various Applications. Low Dust and Good Fluidity.





**ALPACO**

ALUMINIUM PARS OXIDE OF KASRA Co.

## Aluminum Oxide (Alumina)

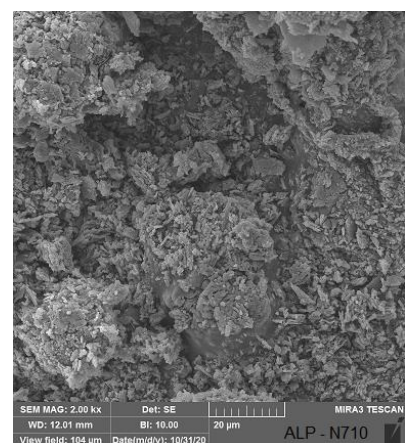
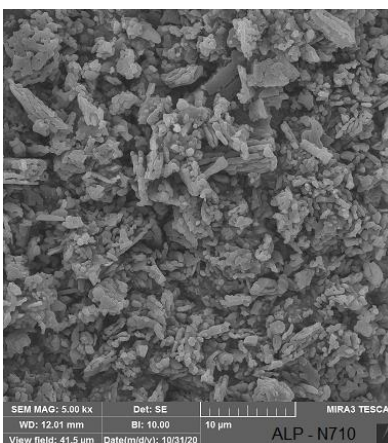
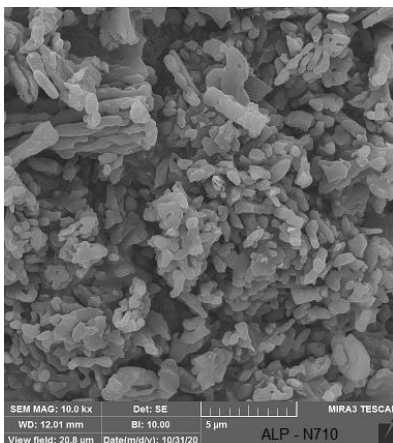
ALPACO Calcined Aluminas are produced in different grades of calcination and soda content, supplied in both unground and ground Particles to satisfy diverse customer requirements.

### Soft Calcined Alumina

### ALP – N710

Normal Soda		Product	ALP – N710 (P90)	ALP – N710 (P05)	ALP – N710 (P20)
Typical Properties					
Chemical Composition	H2O	[%]	0.04	0.1	0.04
	L.O.I	[%]	0.05	0.1	0.05
	Fe2O3	[%]	0.01	0.01	0.01
	SiO2	[%]	0.01	0.01	0.02
	Na2O	[%]	0.35	0.35	0.35
	Al2O3	[%]	99.7	99.7	99.7
D90 (Master Size, Laser Diffraction)		[µm]	120	6	20
D50 (Master Size, Laser Diffraction)		[µm]	60	3.5	12
α Crystal Size		[µm]	1.2 ~ 1.5	< 1.5	1.2 ~ 1.5
BET		M <sup>2</sup> /gr	3.5 – 4.5	4.5 – 5.5	3.6 – 4.9
Bulk Density	Loose	[g/cm <sup>3</sup> ]	0.95	0.85	0.90
	Packed	[g/cm <sup>3</sup> ]	2.15	2.05	2.05
Packing		Big Bag	~ 1000 kg		

ALP – N710: Generic Grade for Various Applications. Low Dust and Good Fluidity.



## Aluminum Oxide (Alumina)

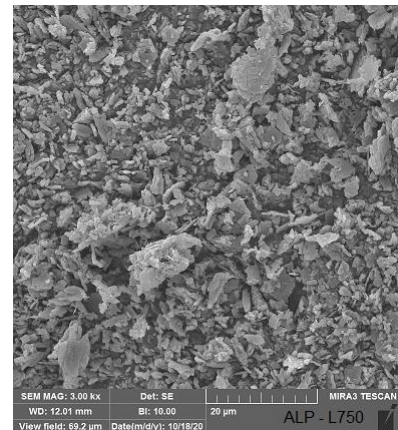
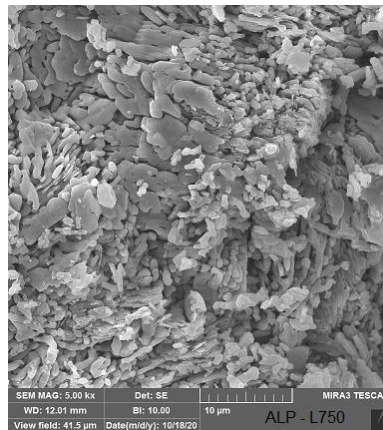
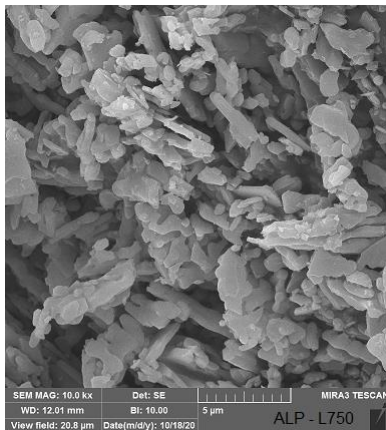
ALPACO Calcined Aluminas are produced in different grades of calcination and soda content, supplied in both unground and ground Particles to satisfy diverse customer requirements.

### Medium Calcined Alumina

### ALP - N750

Normal Soda		Product	ALP - N750 (P90)	ALP - N750 (P05)	ALP - N750 (P20)
Typical Properties					
Chemical Composition	H2O	[%]	0.04	0.1	0.04
	L.O.I	[%]	0.05	0.1	0.05
	Fe2O3	[%]	0.01	0.01	0.01
	SiO2	[%]	0.01	0.01	0.02
	Na2O	[%]	0.35	0.35	0.35
	Al2O3	[%]	99.7	99.7	99.7
D90 (Master Size, Laser Diffraction)		[ $\mu$ m]	120	6	20
D50 (Master Size, Laser Diffraction)		[ $\mu$ m]	60	3.5	12
$\alpha$ Crystal Size		[ $\mu$ m]	1.2 ~ 1.5	< 1.5	1.2 ~ 1.5
BET		M <sup>2</sup> /gr	1.1 – 1.6	1.5 - 19	1.1 – 1.9
Bulk Density	Loose	[g/cm <sup>3</sup> ]	1.15	0.95	1.05
	Packed	[g/cm <sup>3</sup> ]	2.20	2.05	2.15
Packing		Big Bag		~ 1000 kg	

ALP - N750: Generic Grade for Various Applications. Low Dust and Good Fluidity.





**ALPACO**

**ALUMINIUM PARS OXIDE OF KASRA Co.**

## Aluminum Oxide (Alumina)

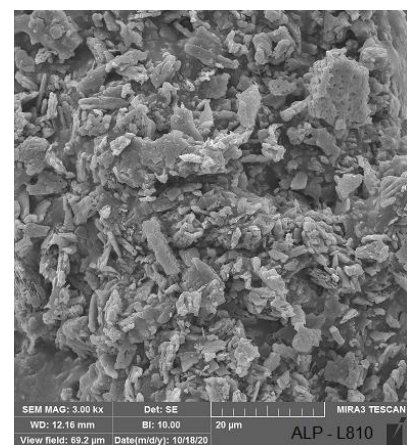
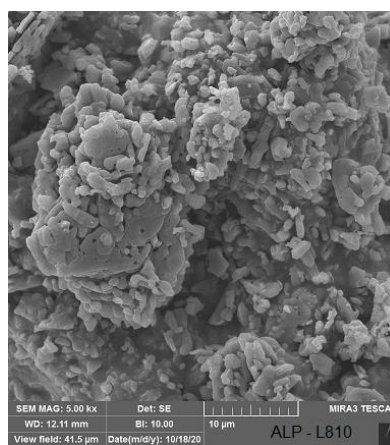
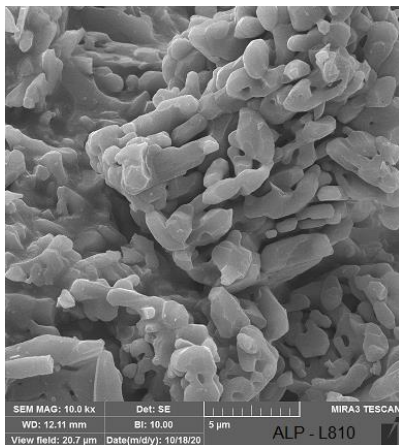
ALPACO Calcined Aluminas are produced in different grades of calcination and soda content, supplied in both unground and ground Particles to satisfy diverse customer requirements.

### Hard Calcined Alumina

#### ALP – N810

Normal Soda		Product	ALP - N810 (P90)	ALP - N810 (P05)	ALP - N810 (P20)
Typical Properties					
Chemical Composition	H2O	[%]	0.04	0.1	0.04
	L.O.I	[%]	0.05	0.1	0.05
	Fe2O3	[%]	0.01	0.01	0.01
	SiO2	[%]	0.01	0.01	0.02
	Na2O	[%]	<0.4	<0.4	<0.4
	Al2O3	[%]	99.7	99.7	99.7
D90 (Master Size, Laser Diffraction)		[µm]	120	6	20
D50 (Master Size, Laser Diffraction)		[µm]	65	4.5	15
α Crystal Size		[µm]	1.5 ~ 2.7	< 1.9	1.5 ~ 2.7
BET		M <sup>2</sup> /gr	0.5 – 0.9	0.6 – 1.1	0.6 – 1
Bulk Density	Loose	[g/cm <sup>3</sup> ]	1.25	1.15	1.20
	Packed	[g/cm <sup>3</sup> ]	2.25	2.20	2.20
Packing		Big Bag		~ 1000 kg	

ALP – N810: Generic Grade for Various Applications. Low Dust and Good Fluidity.







**ALPACO**

ALUMINIUM PARS OXIDE OF KASRA Co.

# Corundom Mullite

ALPACO Calcined Corundom Mullite are produced in different grades of calcination and soda content, supplied in both unground and ground Particles to satisfy diverse customer requirements.

## Corundom Mullite

### ALP – CM500

Typical Properties		Product	ALP – CM500
Chemical Composition	H2O	[%]	0.04
	L.O.I	[%]	0.09
	Fe2O3	[%]	0.16
	SiO2	[%]	4.80 – 6.50
	Na2O	[%]	1.25 – 1.85
	K2O	[%]	0.08
	MgO	[%]	0.12
	Al2O3	[%]	90 - 96
Particle Size		[mm]	0-1
BET		M <sup>2</sup> /gr	0.9 – 1.5
Mineralogy		---	Corundom & Mullite
Bulk Density	Packed	[g/cm <sup>3</sup> ]	> 2.1
	Sintered*	[g/cm <sup>3</sup> ]	> 2.65
Shrinkage*		[%]	12
Packing		Big Bag	

\*At Firing Temperature OF 1580°C



**ALPACO**

ALUMINIUM PARS OXIDE OF KASRA Co.

# Corundom Mullite

ALPACO Calcined Corundom Mullite are produced in different grades of calcination and soda content, supplied in both unground and ground Particles to satisfy diverse customer requirements.

## Corundom Mullite

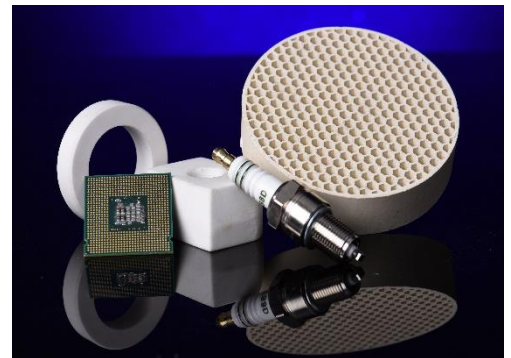
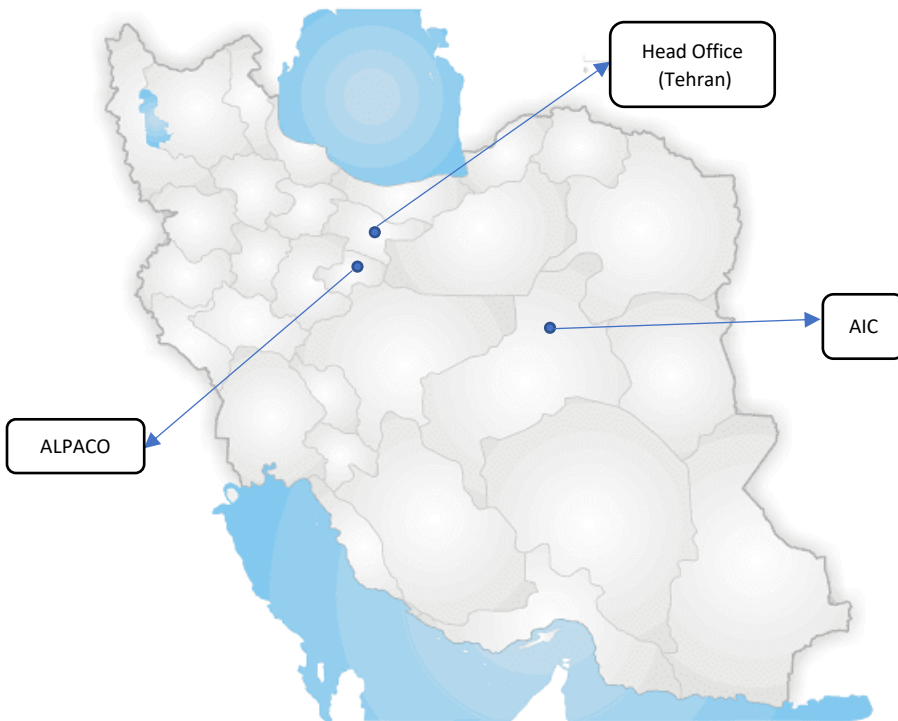
### ALP – CM600

Typical Properties		Product	ALP – CM500
Chemical Composition	H2O	[%]	0.04
	L.O.I	[%]	0.09
	Fe2O3	[%]	0.2
	SiO2	[%]	4.80 – 6.50
	Na2O	[%]	1.25 – 1.85
	K2O	[%]	0.08
	MgO	[%]	0.12
	Al2O3	[%]	90 - 96
Particle Size		[mm]	0-1
BET		M <sup>2</sup> /gr	0.5 – 0.9
Mineralogy		---	Corundom & Mullite
Bulk Density	Packed	[g/cm <sup>3</sup> ]	> 2.4
	Sintered*	[g/cm <sup>3</sup> ]	> 2.75
Shrinkage*		[%]	10
Packing		Big Bag	

\*At Firing Temperature OF 1580°C



**ALUMINIUM PARS OXIDE OF KASRA Co.**



**ALUMINIUM PARS OXIDE OF KASRA Co.**

<http://www.alpaco.co>

[info@alpaco.co](mailto:info@alpaco.co)

Head Office:  
Tehran Province  
TEL: 0098 - 2126372558